

# Electric Fan


FZ10-18TR

***READ AND SAVE THESE INSTRUCTIONS***

Attention: Pictures in the IM are for reference only.



## SAFETY INSTRUCTION

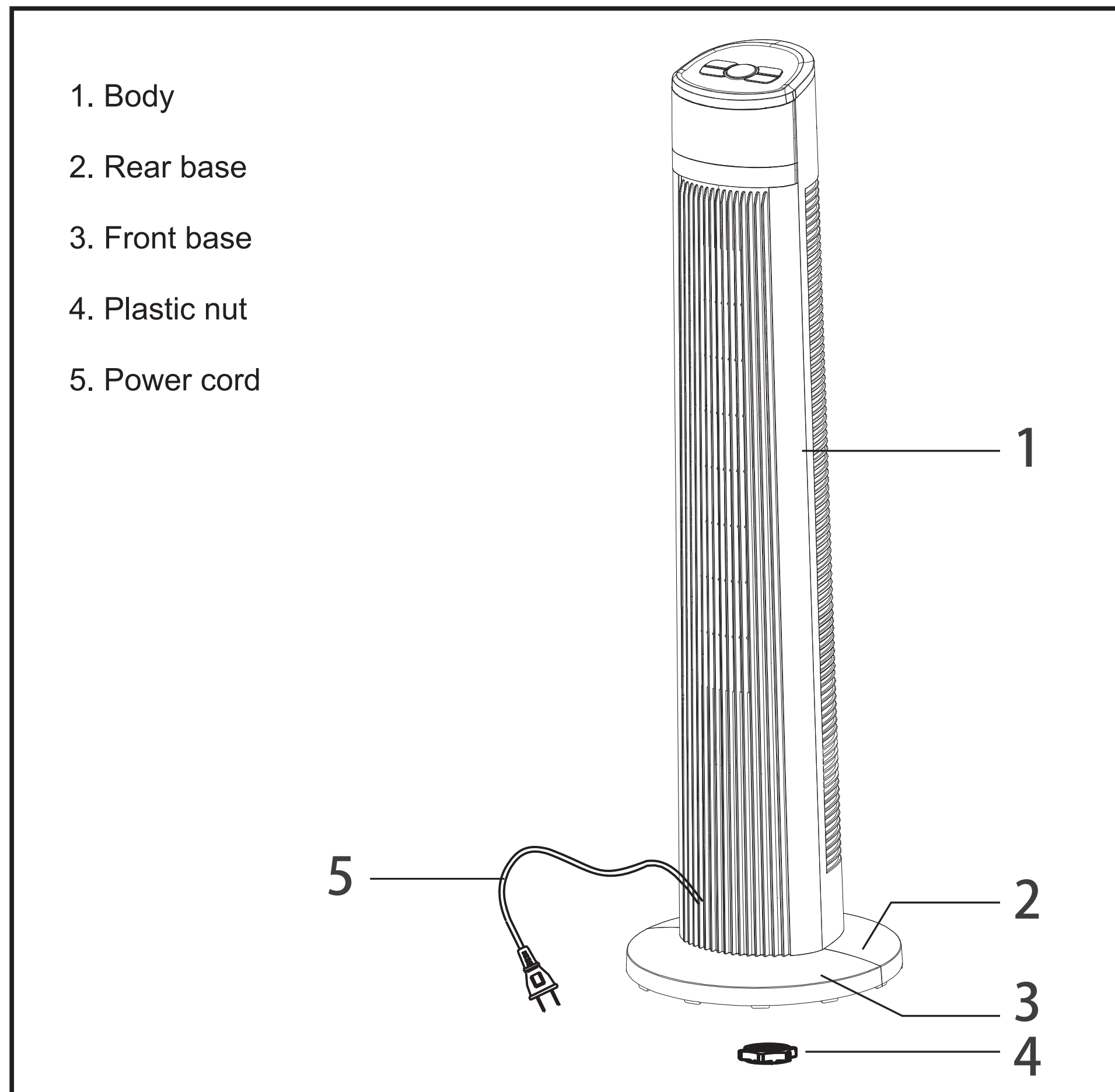
1. If the supply cord is damaged, it must be replaced by manufacturer, its service agent or a similarly qualified person in order to avoid a hazard.
2. This appliance is not intended for use by persons (including children) with reduced physical, sensory or mental capabilities, or lack of experience and knowledge, unless they have been given supervision or instruction concerning use of the appliance by a person responsible for their safety.  
Young children should be supervised to ensure that they do not play with the appliance.
3.  Correct Disposal of this product  
This marking indicates that this product should not be disposed with other household wastes throughout the EU. To prevent possible harm to the environment or human health from uncontrolled waste disposal, recycle it responsibly to promote the sustainable reuse of material resources. To return your used device, please use the return and collection systems or contact the retailer where the product was purchased. They can take this product for environmental safe recycling.
4. Indoor use only.
5. When the appliance is not in use and before cleaning, unplug the appliance from the outlet.
6. To protect against the risk of electrical shock, do not immerse the unit, cord or plug in water or other liquid.

## RULES FOR SAFE OPERATION

1. Never insert fingers, pencils, or any other object through the grille when fan is running.
2. Disconnect fan when moving from one location to another.

3. Be sure fan is on a stable surface when operating to avoid overturning.
4. DO NOT use fan in window, rain may create electrical hazard.
5. Household use only.

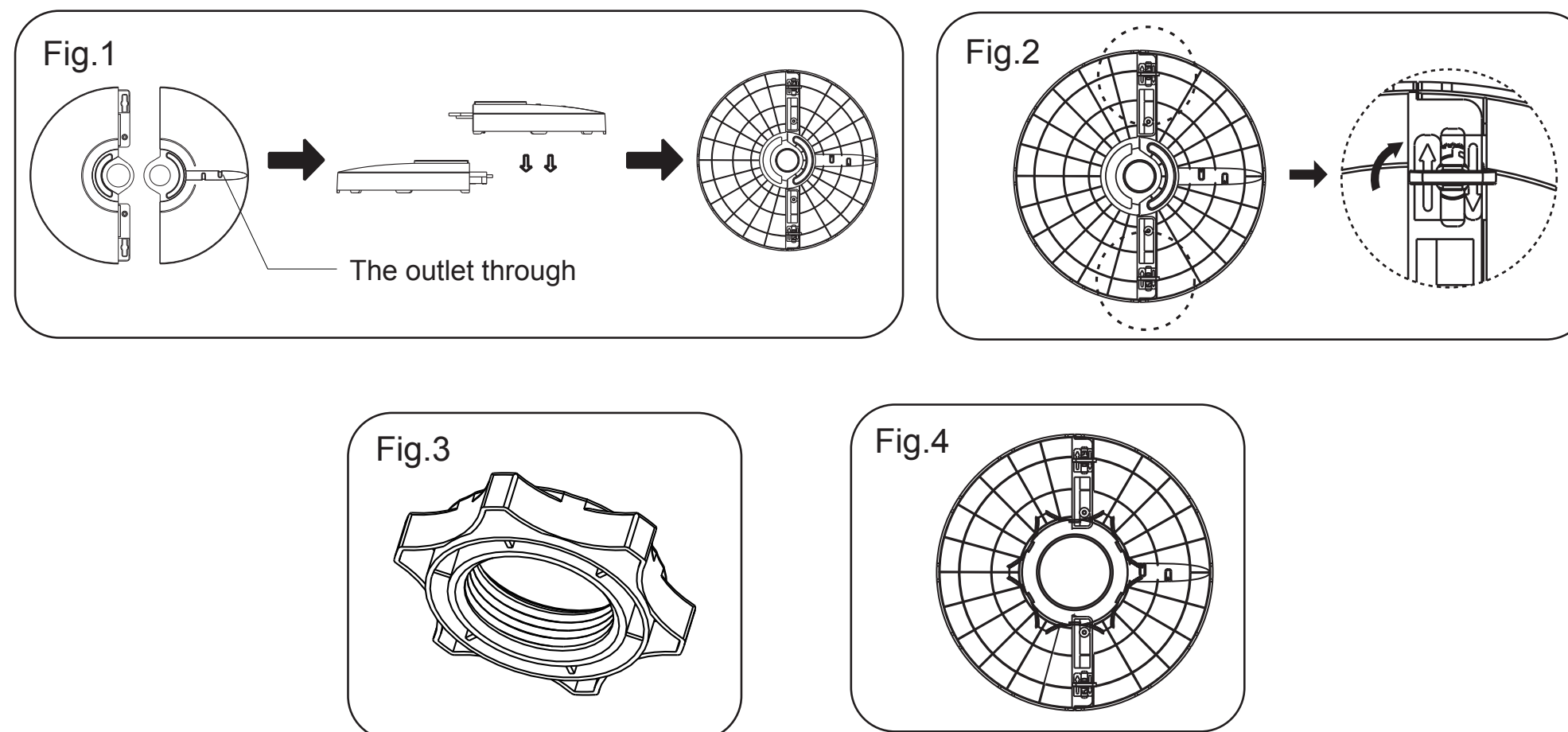
## PART FIGURE



Note: All the pictures in this manual are for explanation purpose only. Any discrepancy between the real object and the illustration in the drawing shall be subject to the real subject.

## ASSEMBLY INSTRUCTIONS

1. Take out the fan body and the spare parts from the box. Put the front base onto rear base and join them together. (See Fig. 1)
2. Revolve the arrows of two rotary knobs about 90°. (See Fig. 2)
3. Unlock the plastic nut from the fan body.
4. Pass the power cord through the flute, then insert the fan body into the base. (See Fig. 4)
5. Fix the fan body on the base with the plastic nut. (See Fig. 3)



## OPERATION INSTRUCTION

### I. Remote Controller (Fig.4)

#### a. KEY INSTRUCTION

1. “” ON/OFF KEY

The “ON” key is for switching on the fan .The fan will be started at breeze step.

Press the “OFF” key if the fan needs to switch off.

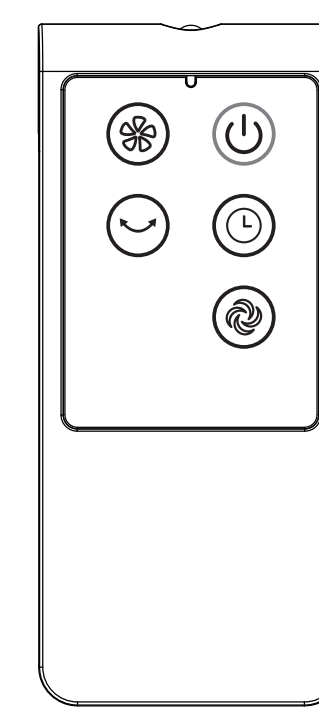


Fig.4

2. “” SPEED KEY

When the fan started, press this key repeated, the fan will work with “1-2-3” circulatory.

3. “” MODE KEY

Press this key to select mode. The sequence is normal, natural, and sleep when this key being touched repeatedly or continuously. The light indicate mode state.

4. “” OSC/LOUVER KEY

After the fan has started, press this key to select oscillation mode. The lights on the display can indicate fan oscillation mode.

5. “” TIMING KEY

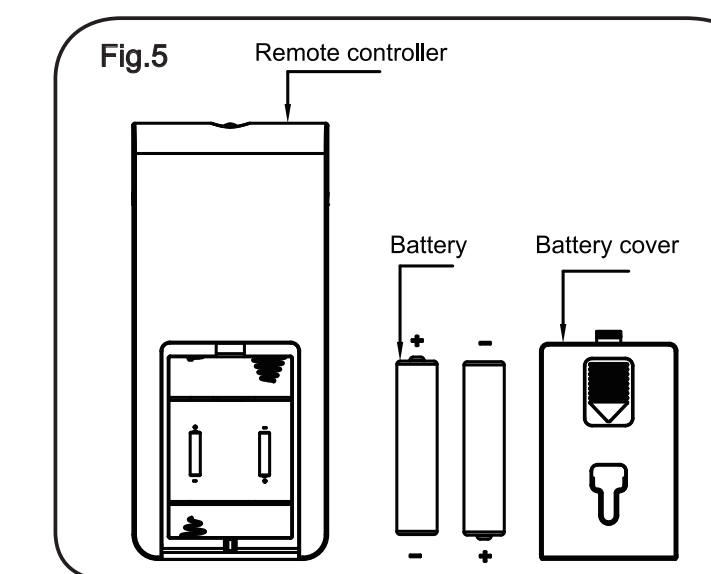
Press this timer key repeatedly to set the time for air delivery. Increase in increments up to "1-2-3-4-5-6-7" hours.

### b. BATTERIES

**(battery not included in the packaging)**

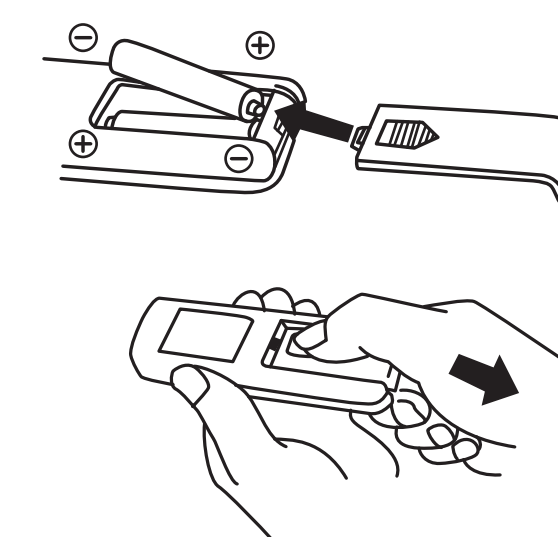
- (1) Slide the battery compartment Cover.
- (2) Insert the batteries, and make sure that the batteries are placed as shown in the Fig.5.
- (3) Slide back the battery cover.

**NOTES:** Use size “AAA” manganese or alkaline batteries. Do not use rechargeable batteries.



### c. BATTERY WARNING AS BELOW

1. “Do not dispose of batteries in fire, batteries may explode or leak.”
2. -Do not mix old and new batteries.
3. -Do not mix alkaline, standard (carbon-zinc) or rechargeable (nickel-cadmium) batteries.



### d. REMOTE CONTROLLER OPERATION

Point the remote controller at the receptor on body of the fan and press the desired button. The remote controller will work at distances of up to roughly five meters and the angle of 30 degree included between right and left from the receptor.

The batteries must be removed from the remote controller before it is scrapped and that they are disposed of safely.

### e. OVERHEAT PROTECTION OF THE MOTOR

The windings of the motor have a thermal-fuse that burns out and the fan switches off and temperature of the motor is no longer going up so that plastic parts of the fan don't subject to deformation so far so to be burned by the overheat if the motor is overheat for any unexpected reason.

### II. Buttons on fan body / Panel indication (Fig.6)

The buttons on the body such as ON/OFF, SPEED, MODE, TIMER, OSCILLATION have the same functions as those of the corresponding keys on the remote controller.

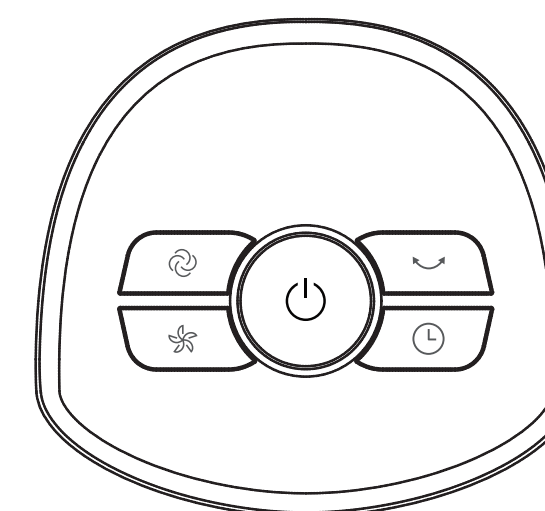


Fig.6

## MAINTENANCE INSTRUCTION

The fan requires little maintenance. Do not try to fix it by yourself.

Refer it to qualified service personnel if service is needed.

1. Before cleaning and assembling, fan must be unplugged.
2. Please wipe the exterior parts with a soft cloth soaking a mild detergent.
3. Do not use any abrasive detergent or solvents to avoid scratching the surface.  
Do not use any of the following as a cleaner: gasoline, thinner.
4. Do not allow water or any other liquid into the motor housing or interior parts.

## CLEANING

1. Be sure to unplug from the electrical supply source before cleaning.
2. Plastic parts should be cleaned with a soft cloth moisten with mild soap. Thoroughly remove soap film with dry cloth.