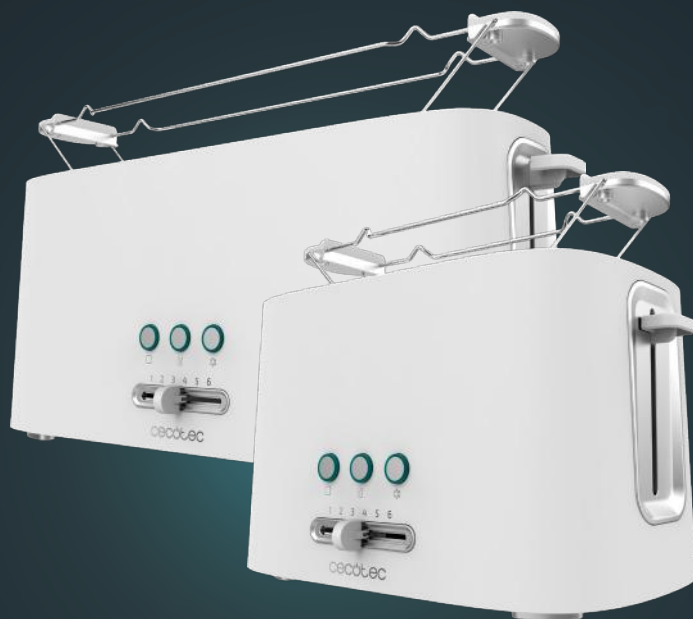


cecotec

TOAST&TASTE 9000 DOUBLE WHITE
TOAST&TASTE 10000 EXTRA WHITE

Toaster



Instruction manual

INDEX

1. Parts and components
2. Before use
3. Operation
4. Cleaning and maintenance
5. Technical specifications
6. Disposal of old electrical appliances
7. Technical support and warranty

SAFETY INSTRUCTIONS

Read these instructions thoroughly before using the appliance. Keep this instruction manual for future reference or new users.

- Make sure that the mains voltage matches the voltage stated on the rating label of the appliance and that the wall outlet is grounded.
- This product is designed only for household use.
- No liability can be accepted for any damage caused by noncompliance with these instructions or any other improper use or mishandling.
- Check the power cord regularly for visible damage. If the cord is damaged, it must be replaced by the official Technical Support Service of Cecotec in order to avoid any type of danger.
- The appliance will be very hot during and immediately after operating. Use gloves or other convenient protection accessories in order to avoid burns and injuries.
- Do not immerse the cord, plug, or any non-removable part of the appliance in water or any other liquid, nor expose the electrical connections to water. Make sure your hands are



- dry before handling the plug or switching on the appliance.
- Do not use outdoors, near a gas or electric hob, in heated ovens or near open flames.
 - Never leave the appliance unattended while in use. Unplug the device after use and when you leave the room where it is installed.
 - Do not use any accessory that has not been recommended by Cecotec, as they might cause injuries or damage.
 - Do not use the device near or below curtains or other flammable materials.
 - Do not use the appliance if its cord, plug, or housing is damaged, nor after it malfunctions or has been dropped or damaged in any way.
 - Do not try to repair the device by yourself. Contact the official Technical Support Service of Cecotec for advice.
 - Turn off and unplug the appliance from the mains supply when not in use, before cleaning it and before assembling components. Pull from the plug, not the cord, to disconnect it from the outlet.
 - Do not twist, bend, strain, or damage the power cord in any way. Protect it from sharp edges and heat sources. Do not let it touch hot surfaces. Do not let the cord hang over the edge of the working surface or countertop.
 - Do not remove food from the device while it is on and hot.
 - Do not insert metal objects or other utensils into the toaster, as this will cause an electric shock or cause a fire.
 - The toasting lever must be in the 'UP' position before connecting or disconnecting the plug from the wall outlet.
 - The appliance is not intended to be used by children under the age of 8. It can be used by children over the age of 8, as long as they are given continuous supervision.
 - This appliance is not intended to be operated by means of an

external timer or separate remote-control system.

- This appliance can be used by children aged 8 and above, and persons with reduced physical, sensory or mental capabilities or lack of experience and knowledge, as long as they have been given supervision or instruction concerning the use of the appliance in a safe way and understand the hazards involved. Do not allow children to play with the appliance.
- Supervise young children to make sure that they do not play with the appliance. Close supervision is necessary when the appliance is being used by or near children.

1. PARTS AND COMPONENTS

Fig. 1.

1. Slots
2. Stop button
3. Reheat button
4. Defrost button
5. Toasting level knob
6. Toasting lever
7. Crumb-collecting tray
8. Bun holder

2. BEFORE USE

- Take the product out of the box and remove all packaging materials, stickers, etc.
- Make sure all parts and components are included and in good conditions. If any visible signs of damage are observed, contact the Technical Support Service immediately.
- Use a damp cloth to clean the toaster.
- Check that all components are properly assembled and place the appliance on a flat, stable surface.
- Make sure that there is enough space between the toaster and the wall or other appliances, as the toaster will become hot during operation.
- Before using the toaster for the first time, it is important to perform a toasting process without bread. Press the toast lever until it latches into place.
- When the toasting is finished, the toast levers automatically jump up. The toaster is now ready to be used with bread.

Warning

A slight odour and smoke might appear when operating the device for the first time. This is due to manufacturing material residues and does not affect the appliance's operating.

3. OPERATION

Tips for ideal toasting results

- Different types of bread have varying moisture content. Therefore, the same toast darkness setting can produce different results.

- For bread that is slightly dry, use a lower toast darkness setting.
- For fresh bread or whole grain bread, use a higher toast darkness setting.
- Bread with an irregular surface requires a higher toast darkness setting.
- Thick bread slices need more time for toasting; it may even be necessary to toast the bread a second time.
- When toasting only one slice, select a low toast darkness setting.
- When toasting several slices of bread one after the other, the device will be hot and will toast bread faster.
- To toast frozen bread, waffles or other pastry, use the defrost button.
- When toasting several slices at the same time, ensure they are of similar size and thickness.
- Bread from the previous day has less moisture; therefore, it will be more crispy.
- Bread from the previous day and thin slices toast in less time; therefore, it is recommended to use a lower power level.
- Breads with sweet ingredients such as nuts or fruits are cooked in less time; therefore, it is recommended to use a lower power level.

Toasting

1. Place the toaster in an upright position, on a stable, flat and heatproof surface.
2. Plug the device into a power supply.
3. Introduce the slices of bread in the slots.
4. Use the power knob to select the desired toasting grade. There are 6 different levels, from 1 (Light toasting) to 6 (Dark toasting).

Recommendation

Set level 3 (Medium toasting) for brown results.

1. Push the toast lever down until it latches into place. The stop indicator light will turn on and the toasting process will start.
2. The toasting process can be interrupted at any time by pushing the stop button.
3. When the selected toasting grade is achieved, the bread will be ejected automatically and the appliance will turn off.

Reheat

1. Introduce the slices of bread in the slots.
2. Use the lowest power level. Use this function to warm bread only, without butter or other products.
3. If you wish to warm up pastry, place the bun warmer on the toaster and place pastry on top. To assemble it, fold both support sides towards the inside and place it so that the ends are slightly inserted in the slots. To store it, push the feet outwards.

4. Push the toast lever down until it latches into place.
5. Press the reheat button.

Note

- Bread or pastry is warmed but not toasted.
- The reheating process can be interrupted at any time by pushing the stop button.
- When the food is warmed, it will be ejected automatically and the appliance will turn off.

Defrost

This mode defrosts bread first and then toasts it. For this reason, the process takes longer than the rest of the functions.

1. Introduce the slices of bread in the slots.
2. If you wish to defrost pastry, place the bun warmer on the toaster and place pastry on top.
3. Use the power knob to select the desired defrost grade. Recommended levels
 - Low: For bread from the refrigerator or thin frozen bread slices.
 - Medium: Frozen waffles or rolls.
 - High: Thicker frozen bread slices and for rolls and thick toast slices.
4. Push the toast lever down until it latches into place.
5. Press the defrost button.
6. The defrost process can be interrupted at any time by pushing the stop button.
7. When the food is defrosted, it will be ejected automatically and the appliance will turn off.

4. CLEANING AND MAINTENANCE

- Always turn off and unplug the appliance after each use and before cleaning.
- Allow the appliance to cool down before cleaning and storing.
- Use a soft, damp cloth to clean the device's surface.
- Do not immerse the appliance in water or other liquid, and do not wash it in the dishwasher.
- Do not use abrasive cleaners or scouring pads to clean the product.
- To remove stuck bread slices, unplug the toaster and turn it over and shake lightly.
- Remove crumbs and any small pieces of bread from the crumb tray regularly. To do this, pull the crumb tray on the side all the way out and empty it. Wipe the crumb tray with a damp cloth, then dry it thoroughly and push it back into the appliance.
- The appliance must be completely dry before you use it again.

Warning

Never attempt to remove stuck bread slices with sharp or pointed tools or silverware.

5. TECHNICAL SPECIFICATIONS

Model: Toast&Taste 9000 Double white/Toast&Taste 10000 Extra white

References: 03188/03189

Power: 820-980 W

Voltage and frequency: 220-240 V, 50/60 Hz

Made in China | Designed in Spain

6. DISPOSAL OF OLD ELECTRICAL APPLIANCES



The European directive 2012/19/EU on Waste Electrical and Electronic Equipment (WEEE), specifies that old household electrical appliances must not be disposed of with the normal unsorted municipal waste. Old appliances must be collected separately, in order to optimise the recovery and recycling of the materials they contain and reduce the impact on human health and the environment.

The crossed out "wheeled bin" symbol on the product reminds you of your obligation to dispose of the appliance correctly.

Consumers must contact their local authorities or retailer for information concerning the correct disposal of old appliances and/or their batteries.

7. TECHNICAL SUPPORT AND WARRANTY

This product is under warranty for 2 years from the date of purchase, as long as the proof of purchase is submitted, the product is in perfect physical condition, and it has been given proper use, as explained in this instruction manual.

The warranty will not cover the following situations:

- The product has been used for purposes other than those intended for it, misused, beaten, exposed to moisture, immersed in liquid or corrosive substances, as well as any other fault attributable to the customer.
- The product has been disassembled, modified, or repaired by persons, not authorised by the official Technical Support Service of Cecotec.
- Faults deriving from the normal wear and tear of its parts, due to use.

The warranty service covers every manufacturing defects of your appliance for 2 years, based on current legislation, except consumable parts. In the event of misuse, the warranty will not apply.

If at any moment you detect any problem with your product or have any doubt, do not hesitate to contact Cecotec Technical Support Service at +34 963 210 728.

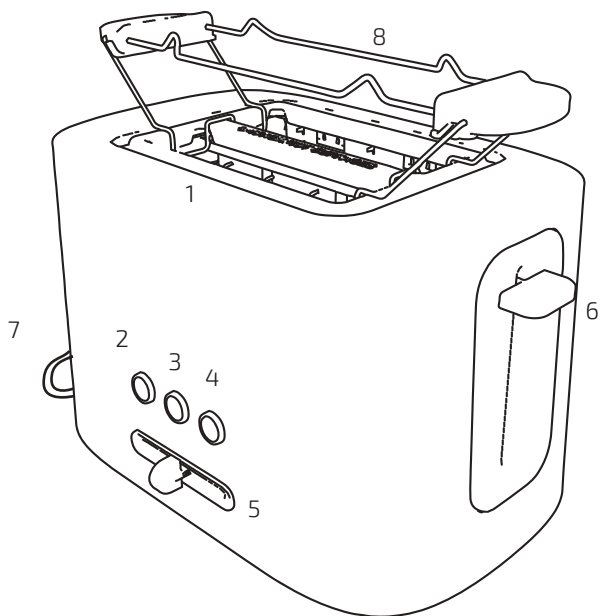


Fig./Img./Abb./Afb./ Rys./Obr. 1

www.cecotec.es

Cecotec Innovaciones S.L.
C/ de la Pinadeta s/n, 46930
Quart de Poblet, Valencia (Spain)
EA01210331