

# CONGA

## ROCKSTAR

### CONGA ROCKSTAR 3700 GLASS

Aspirador limpiacristales / Window & glass vacuum cleaner



Manual de instrucciones  
Instruction manual  
Manuel d'instructions  
Bedienungsanleitung  
Manuale di istruzioni  
Manual de instruções  
Handleiding  
Instrukcja obsługi  
Návod k použití

## INDEX

1. Parts and components	42
2. Before use	42
3. Product assembly	42
4. Operation	43
5. Cleaning and maintenance	43
6. Technical specifications	43
7. Disposal of old electrical and electronic appliances	44
8. Technical support and warranty	44
9. Copyright	44

## SAFETY INSTRUCTIONS

Read these instructions thoroughly before using the product. Keep this instruction manual for future reference or new users.

- This appliance can be used by children aged 8 years old and above and persons with reduced physical, sensory, or mental capabilities or lack of experience and knowledge if they have been given supervision or instruction concerning the use of the appliance in a safe way and understand the hazards involved. Children must not play with the appliance. Cleaning and maintenance tasks should not be carried out by unsupervised children.
- Supervise children to prevent them from playing with the appliance. Close supervision is necessary when the appliance is being used by or near children.
- Switch off and unplug the product from the mains before cleaning or maintenance tasks.
- The appliance must not be left unattended while plugged to the mains.
- Check the power cord regularly for visible damage. If the cord is damaged, it must be repaired by the official Technical Support Service of Cecotec to avoid any type of danger.
- The appliance must only be powered by a safety extra-low voltage matching appliance specifications.
- Make sure that the mains voltage matches the voltage stated on the product marking and that the wall outlet is grounded.
- This product is only suitable for flat surfaces like windows, mirrors, tables, etc.
- Do not use the product on rough surfaces, as doing so may damage the nozzle.
- Do not use or vacuum foaming cleaning products to prevent bubble formation.

- Do not clean flammable, combustible, or explosive substances, and do not vacuum burning or smouldering objects like cigarette ends or matches.
- Do not vacuum harmful or toxic substances like chlorine, bleach, ammonia, etc.
- Do not vacuum sharp or hard objects.
- Make sure the opening is not blocked by dust, lint, hair, or any other object that may affect the air inlet or outlet of the appliance.
- Do not expose the appliance to direct sunlight, heat, or fire to avoid the risk of explosion.
- If the air inlet is blocked, turn off the appliance, remove the elements causing the blockage, and restart it.
- Turn off and unplug the product from the socket before assembling, opening, emptying, or inserting or removing any accessories.
- Clean the product carefully and charge it completely if you are planning to store it for a long period of time.
- Make sure the appliance is unplugged from the mains and switched off before cleaning or repairing. To disconnect it, do not pull the power cord. Instead, pull on the adapter.
- Do not use this product to vacuum dust.

## **BATTERY INSTRUCTIONS**

- **WARNING:** to recharge the battery, use only the power supply unit provided with the appliance, with reference TEKA006-0501000EU.
- The appliance contains a battery that should only be replaced by qualified personnel.
- Non-rechargeable batteries should not be recharged.

- Do not disassemble, open, or break the secondary battery.
- Do not expose the battery to heat or fire. Avoid storage in direct sunlight.
- Do not subject the battery to mechanical shock.
- Both batteries and cells can leak under extreme conditions. In the event of a battery leak, keep your skin and eyes away from the liquid. If the liquid gets into contact with skin, wash immediately with soap and water. If the liquid gets into the eyes, wash them immediately with clean water for a minimum of 10 minutes and seek medical attention. Wear gloves to handle the battery and dispose of it immediately in accordance with local regulations.
- Do not use any charger other than the one supplied specifically for this appliance.
- In case of battery ingestion, please seek medical attention immediately.
- Secondary cells and batteries must be charged before use. Always use the correct charger and refer to the manufacturer's instructions or equipment manual for proper charging instructions.
- Do not leave the battery on prolonged charge when not in use.
- After long periods of storage, it may be necessary to charge and discharge the battery several times to obtain maximum performance.
- Keep the original instruction manual for future reference.
- Use the battery only for its intended purpose.

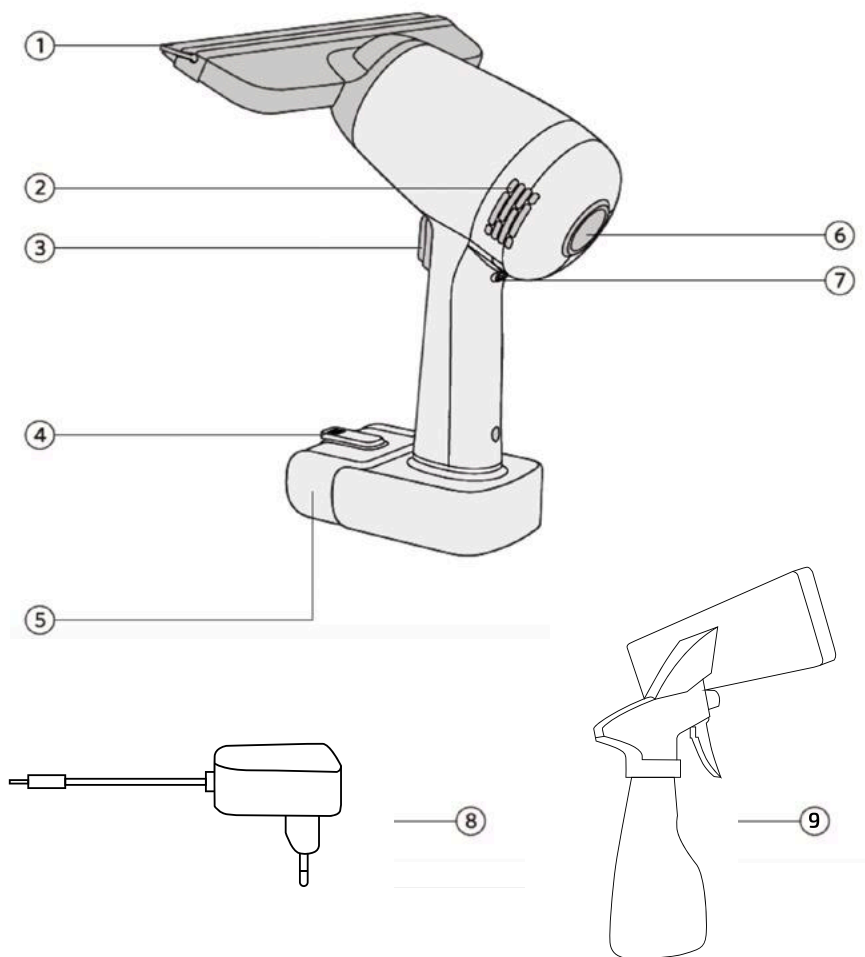


Fig./Img./Abb./Afb./ Rys./Obr. 1

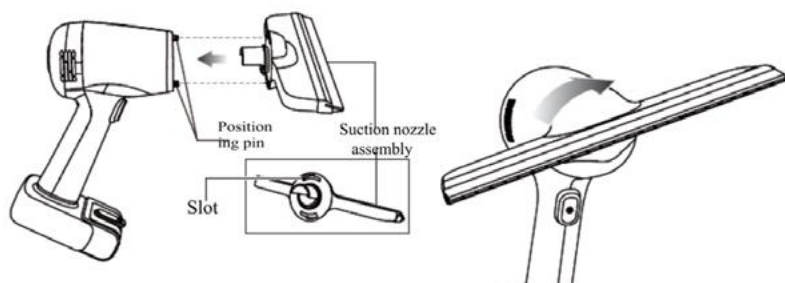


Fig./Img./Abb./Afb./ Rys./Obr. 2

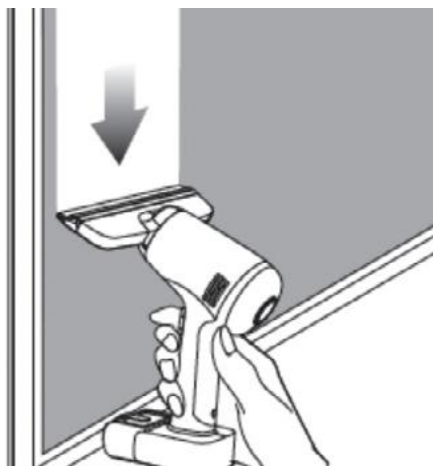


Fig./Img./Abb./Afb./ Rys./Obr. 3



Fig./Img./Abb./Afb./ Rys./Obr. 4



Fig./Img./Abb./Afb./ Rys./Obr. 5



## 1. PARTS AND COMPONENTS

Fig. 1.

1. Suction nozzle
2. Air outlet
3. On/Off
4. Water-tank tab
5. Water tank
6. Battery indicator
7. Charging port
8. USB cord
9. Spray bottle with mop

NOTE:

The graphics in this manual are schematic representations and may not exactly match the product.

## 2. BEFORE USE

- This appliance is packaged in a way as to protect it during transport. Take the appliance out of its box and remove all packaging materials. You can keep the original box and other packaging elements in a safe place. This will help you prevent product damage when transporting it in the future. In case the original packaging is disposed of, make sure all packaging materials are recycled accordingly.
- Make sure all parts and components are included and in good conditions. If there is any piece missing or in bad conditions, contact the official Cecotec Technical Support Service immediately.

### Box contents

- Conga RockStar 3700 Glass window & glass vacuum cleaner
- Spray bottle with mop
- 220-mm suction nozzle
- USB cord
- Instruction manual
- Spray bottle with mop

### 3. PRODUCT ASSEMBLY

Insert the suction nozzle on the main body.

Turn the suction nozzle clockwise making sure it fits correctly.

Fig. 2.

### 4. OPERATION

#### **Cleaning glass surfaces**

Pressing the trigger will make the battery indicator flash blue. Then, proceed to vacuuming and cleaning the pre-moistened surface from top to bottom.

Fig. 3.

#### **Recharge**

Plug the micro USB inlet to the connector on the main body.

Fig. 4.

### 5. CLEANING AND MAINTENANCE

Open the waste-water tank cap to empty the waste water and wash the tank.

Fig. 5.

#### **Warnings**

- The motor and battery are inside the main body, do not immerse it in water.
- Make sure all parts are completely dry before storing the device.
- Do not exceed the MAX. mark on the waste-water tank to prevent dripping.

### 6. TECHNICAL SPECIFICATIONS

Model: Conga Rockstar 3700 Glass

Product reference: 08058

Protection type: IPX4

Waste-water tank capacity: 50 ml

Power: 3,7 V DC, 15 W

Battery data:

Battery designation: 18650AC20

Rated capacity: 2000 mAh, 7.4 wh

Nominal voltage: 3.7 V

Charging cord: USB C

Technical specifications may change without prior notification to improve product quality.

Made in China | Designed in Spain

## 7. DISPOSAL OF OLD ELECTRICAL AND ELECTRONIC APPLIANCES



This symbol indicates that, according to the applicable regulations, the product and/or batteries must be disposed of separately from household waste. When this product reaches the end of its shelf life, you should dispose of the batteries/accumulators and take them to a collection point designated by the local authorities.

Consumers must contact their local authorities or retailer for information concerning the correct disposal of old appliances and/or their batteries.

Compliance with the above guidelines will help to protect the environment.



## 8. TECHNICAL SUPPORT AND WARRANTY

Cecotec shall be liable to the end user or consumer for any lack of conformity that exists at the time of delivery of the product under the terms, conditions, and deadlines established by the applicable regulations.

It is recommended that repairs be carried out by qualified personnel.

If at any moment you detect any problem with your product or have any doubt, do not hesitate to contact Cecotec's official Technical Support Service at +34 963 210 728.

## 9. COPYRIGHT

The intellectual property rights over the texts in this manual belong to CECOTEC INNOVACIONES, S.L. All rights reserved. The contents of this publication may not, in whole or in part, be reproduced, stored in a retrieval system, transmitted, or distributed by any means (electronic, mechanical, photocopying, recording or similar) without the prior authorization of CECOTEC INNOVACIONES, S.L.

[www.cecotec.es](http://www.cecotec.es)

Cecotec Innovaciones S.L.  
C/ de la Pinadeta s/n, 46930  
Quart de Poblet, Valencia (Spain)  
YV\_01221128